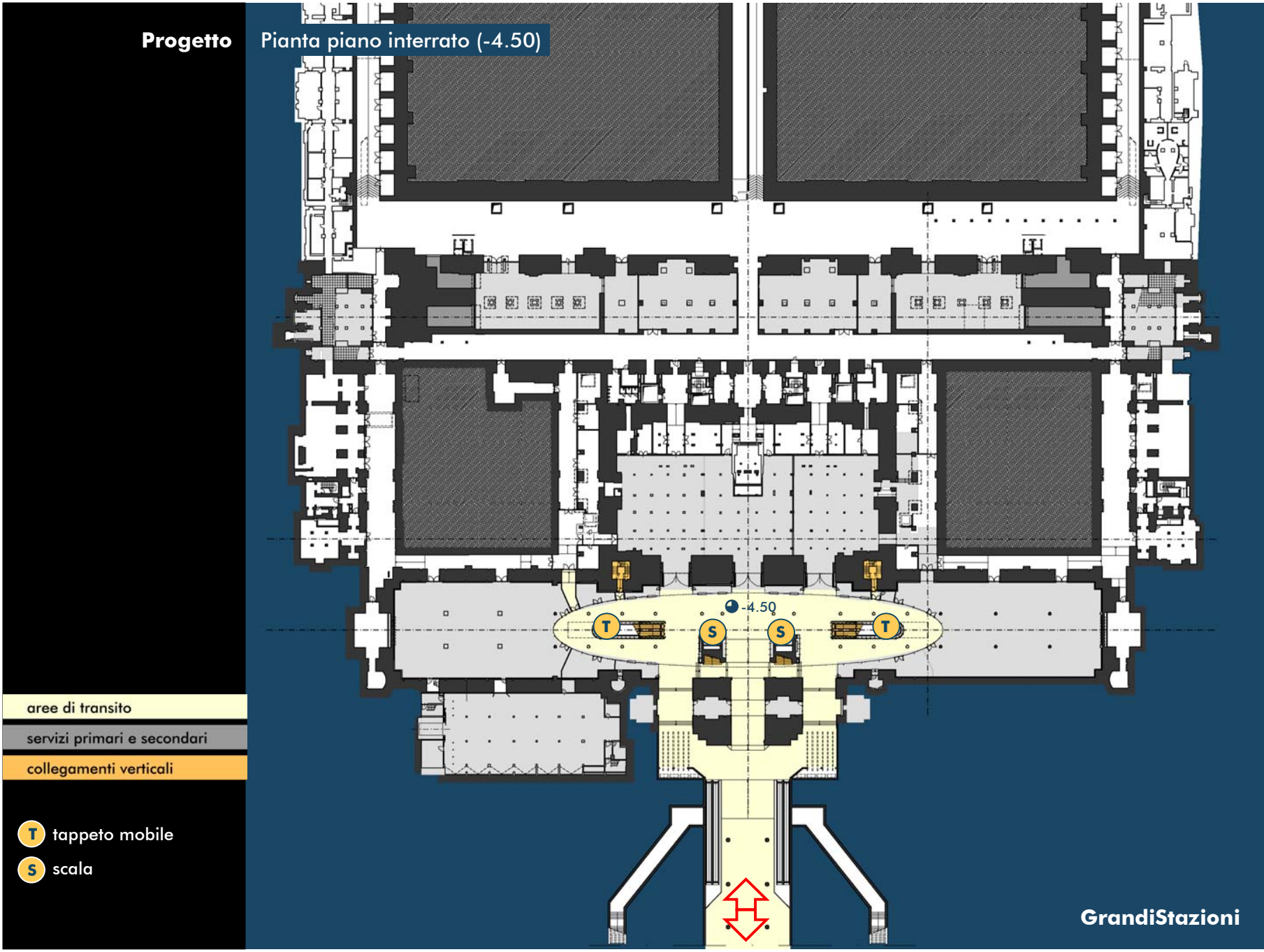


Milano Centrale



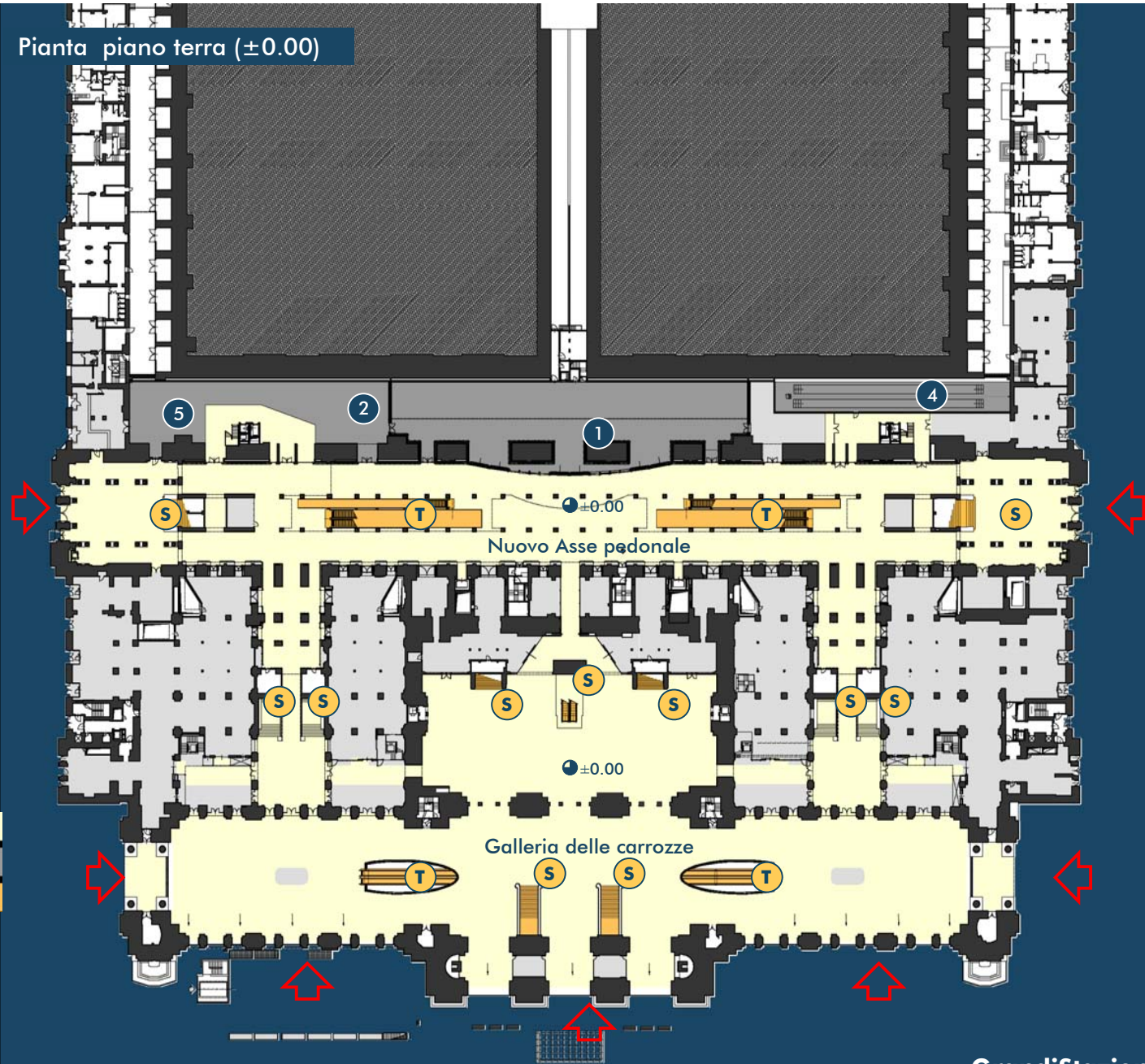
- ① biglietteria
- ② informazioni
- ④ deposito bagagli
- ⑤ assistenza clientela

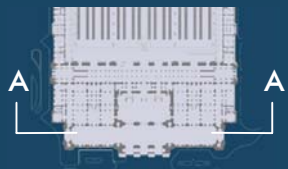
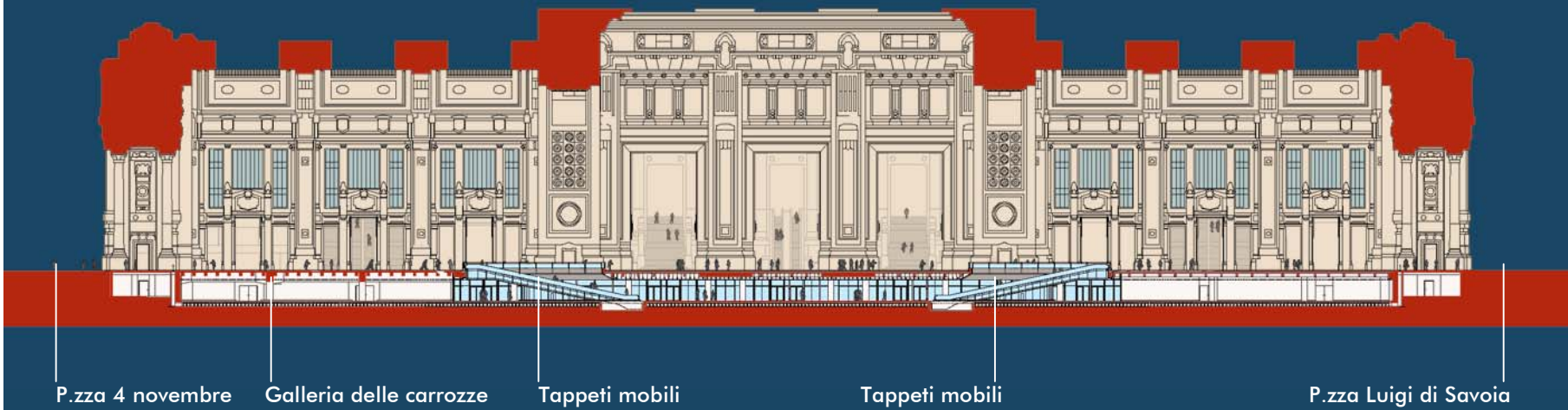
aree di transito

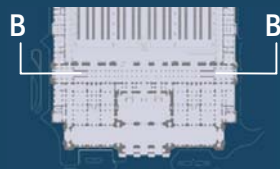
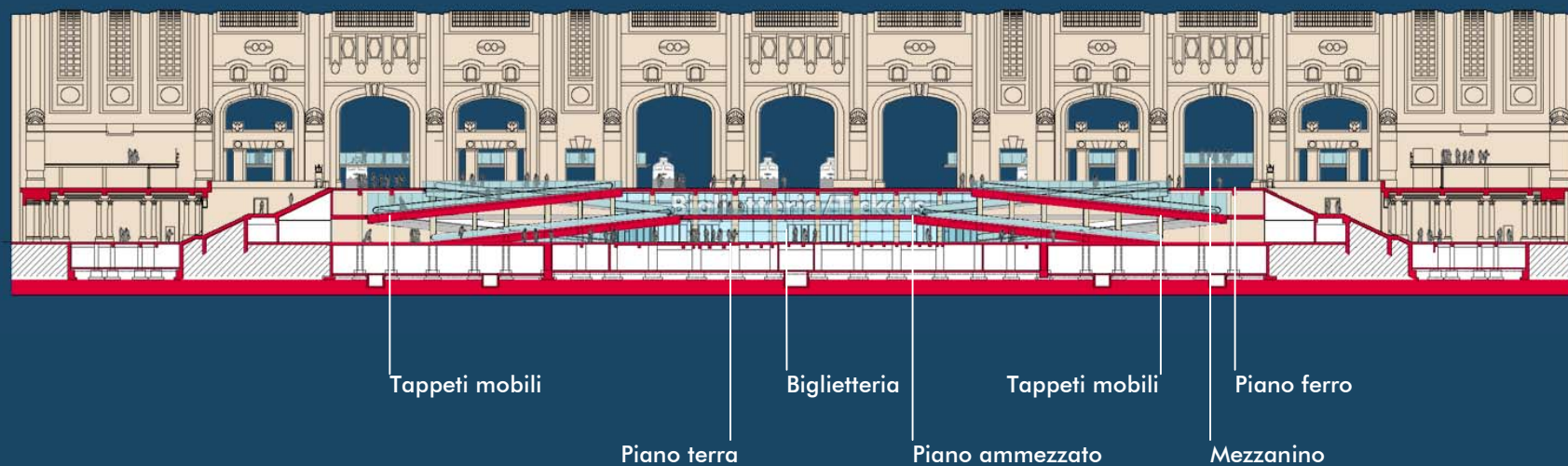
servizi primari e secondari

collegamenti verticali

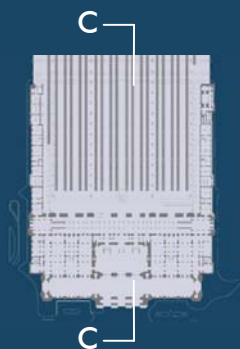
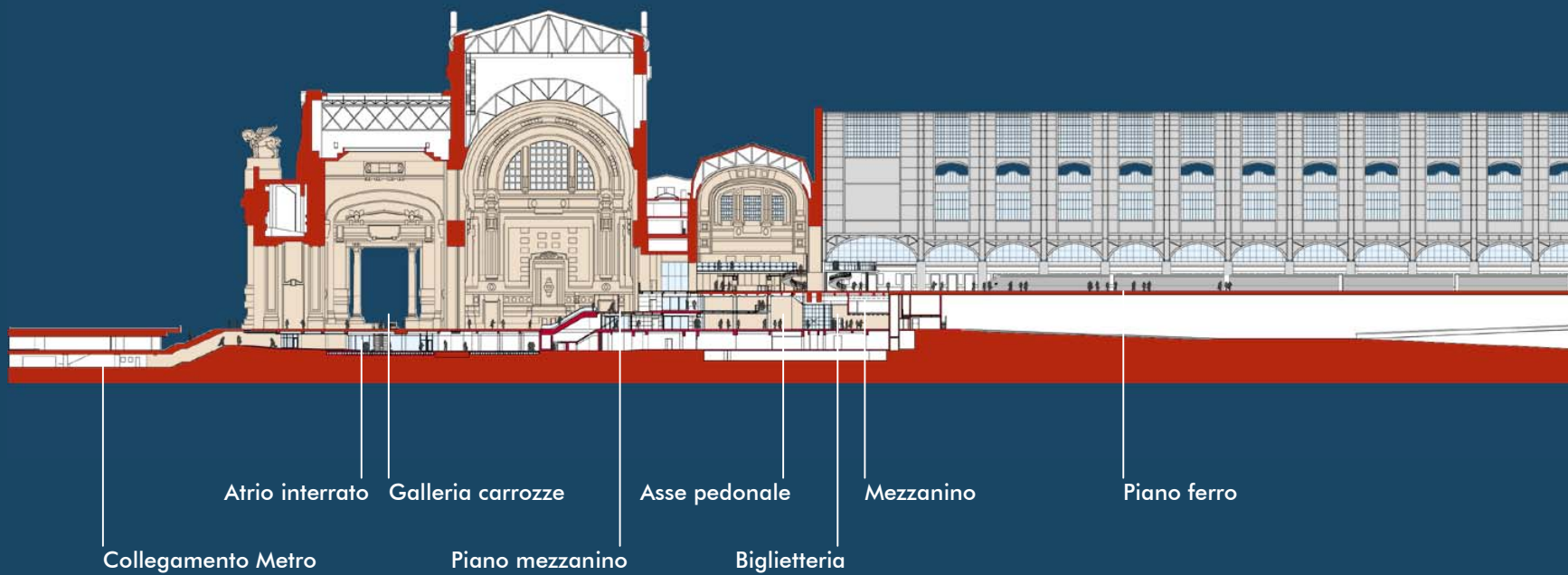
- T tappeto mobile
- S scala







Progetto Sezione longitudinale C-C



- ③ servizi igienici
- ④ deposito bagagli

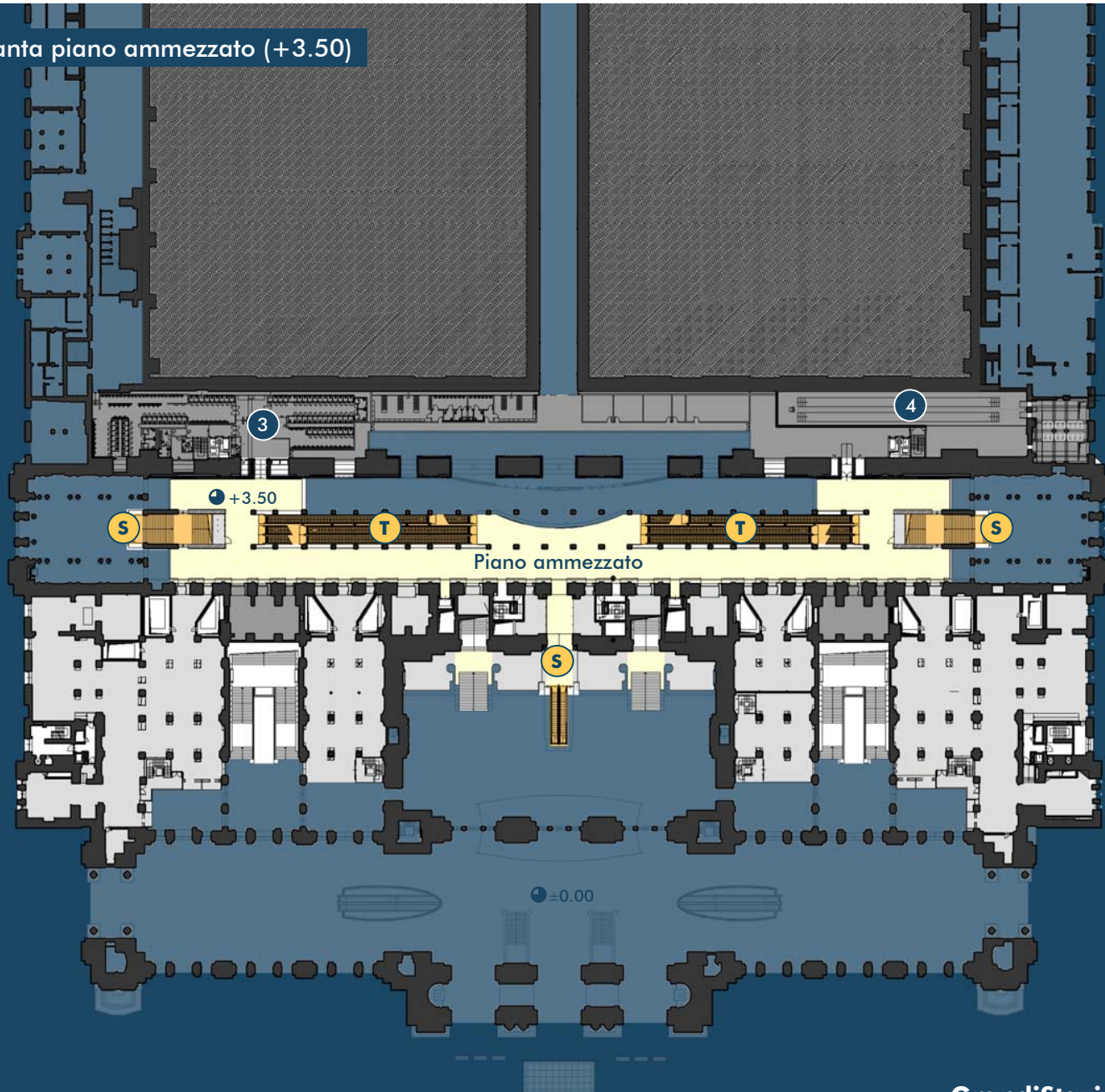
aree di transito

servizi primari e secondari

collegamenti verticali

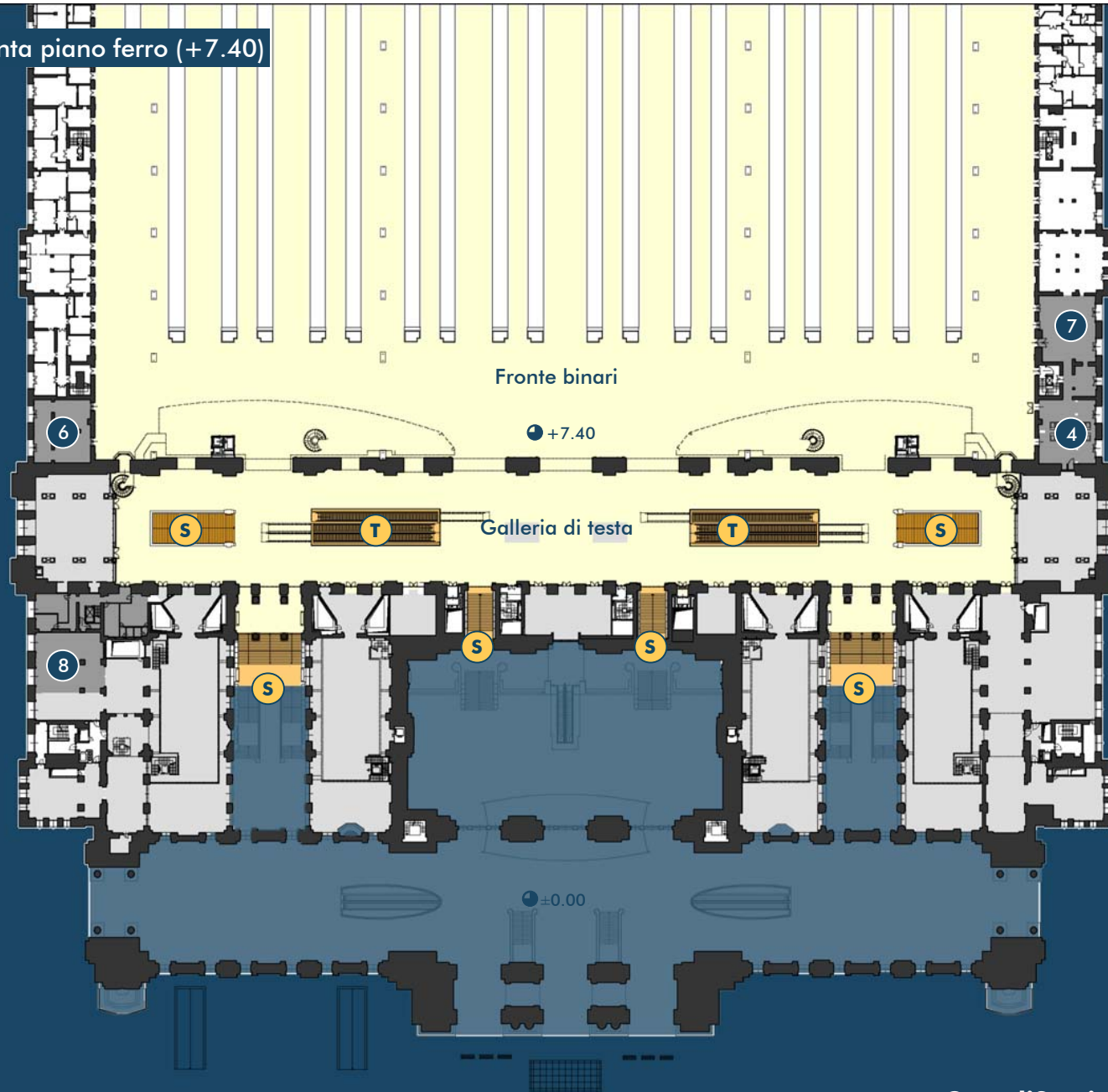
T tappeto mobile

S scala



Progetto

Pianta piano ferro (+7.40)



Fronte binari

● +7.40

Galleria di testa

● ±0.00

- ④ deposito bagagli
- ⑥ sala viaggiatori
- ⑦ club eurostar
- ⑧ polfer

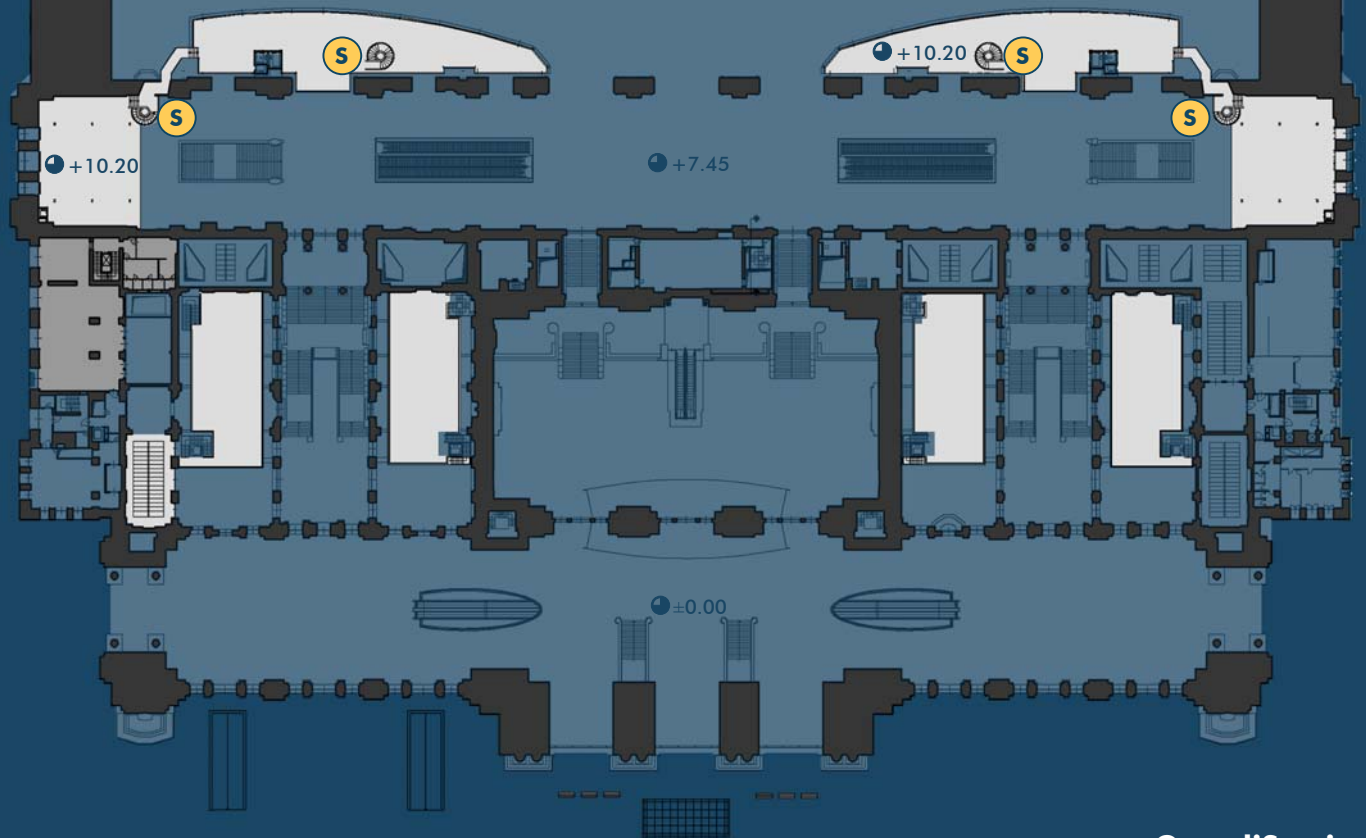
aree di transito

servizi primari e secondari

collegamenti verticali

T tappeto mobile

S scala



aree di transito

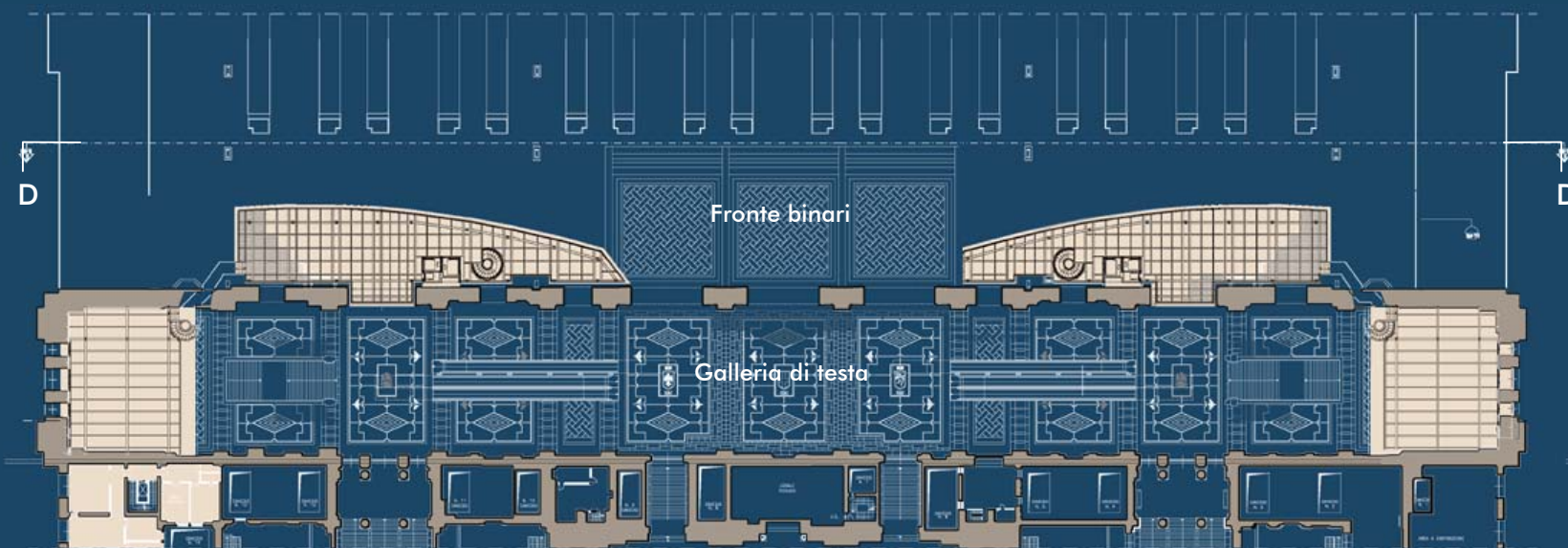
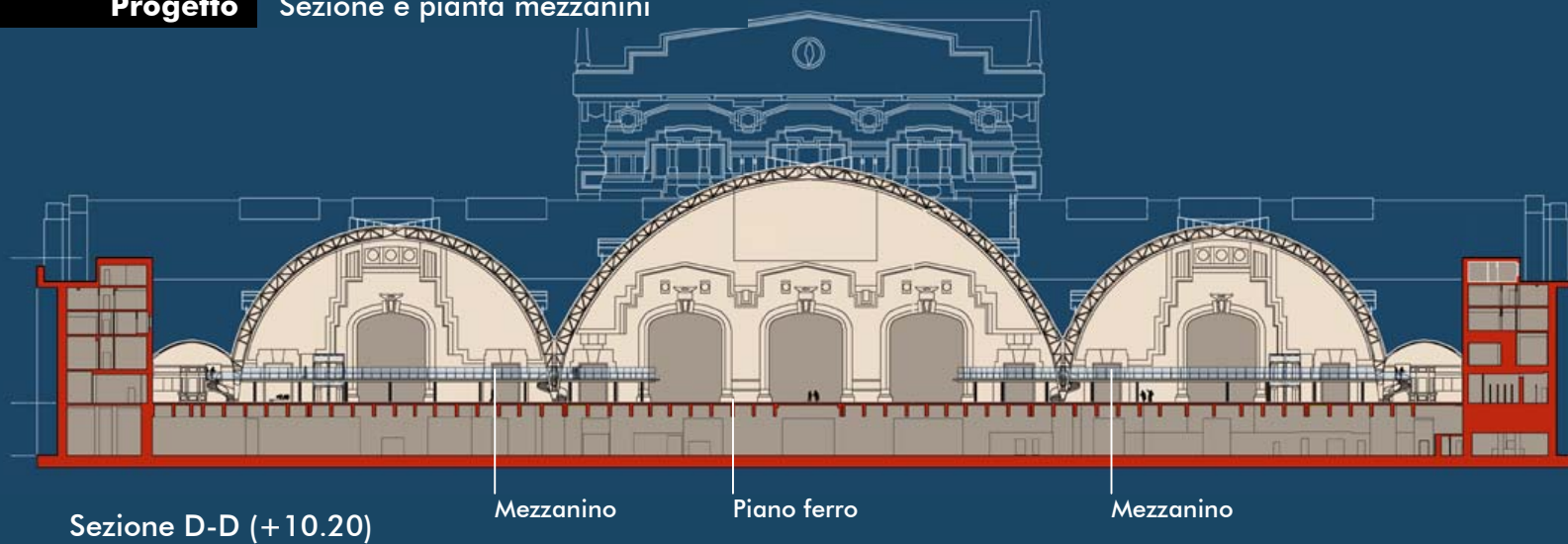
servizi primari e secondari

collegamenti verticali

T tappeto mobile

S scala

Progetto Sezione e pianta mezzanini



Pianta mezzanini (+10.20)

Progetto Flussi principali piano terra

